

WibuKey Dongle Help

© Camprox OHG 2018

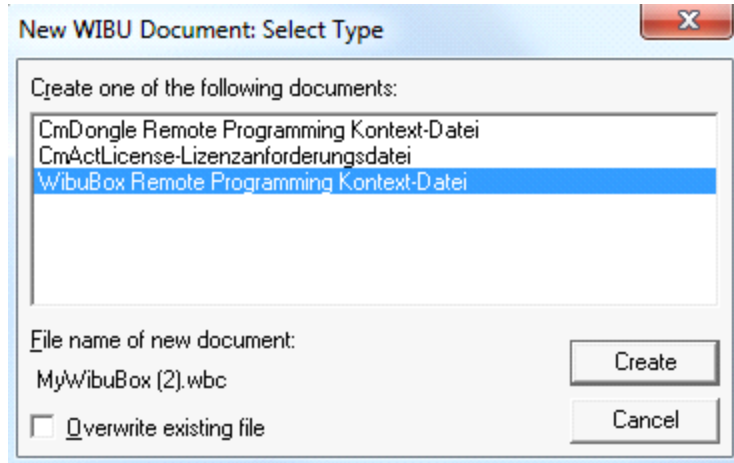


Table of Contents

Foreword	0
Part I Create a Contextfile	3
Part II How to use Dongle Local	3
1 Install Files.....	3
2 Settings for your Computer.....	3
3 Settings for cadXtract.....	4
Part III How to use Dongle on Servers (LAN)	6
1 Settings for your Computer.....	6
2 Settings for the Server.....	7
Part IV Trouble Shooting	8
1 Crash after Win 10 Update.....	9

1 Create a Contextfile

Right-click, then goto new -> WIBU Control File



Select Entry and click create.

2 How to use Dongle Local

This chapter will explain how to use a Wibu-Dongle local on your machine

2.1 Install Files

Please go to download section of Wibu -> <http://www.wibu.com/de/anwendersoftware.html>

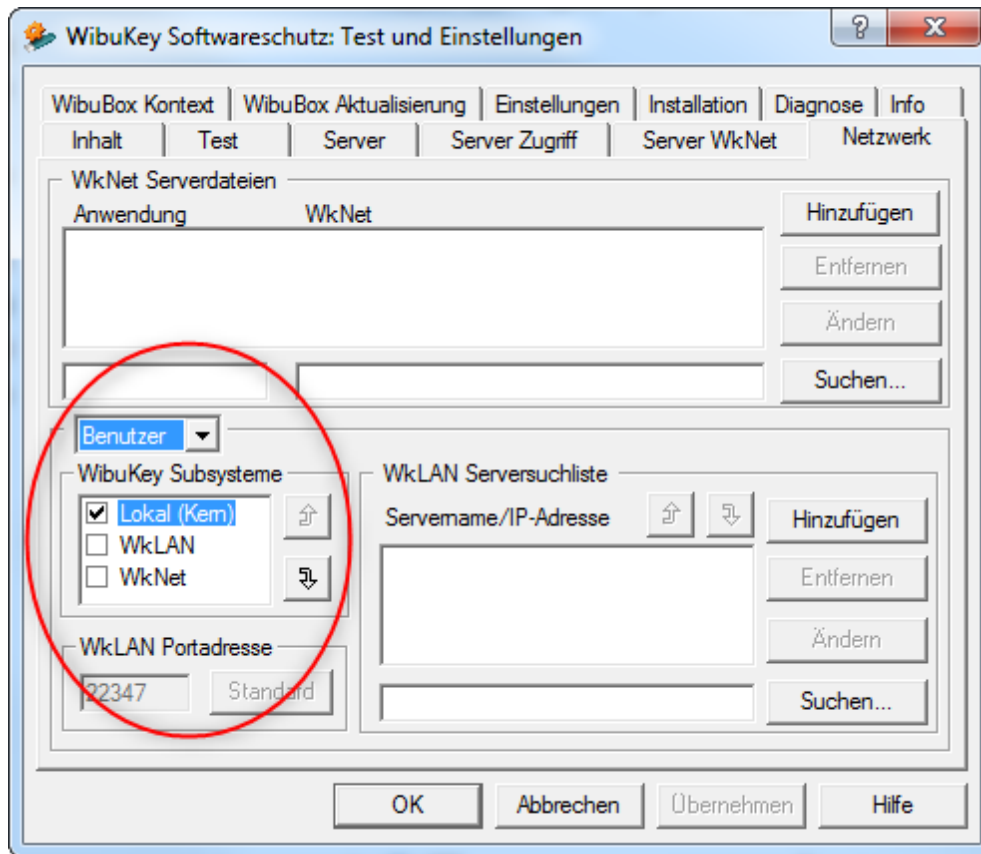
and get WibuKey Runtime for your current platform and install it.

Please keep in mind, that, if you want to use the dongle on a server, you have to install the software on your PC **AND** the server!

2.2 Settings for your Computer

Open up the program under system control -> search in searchbar for wibukey -> open

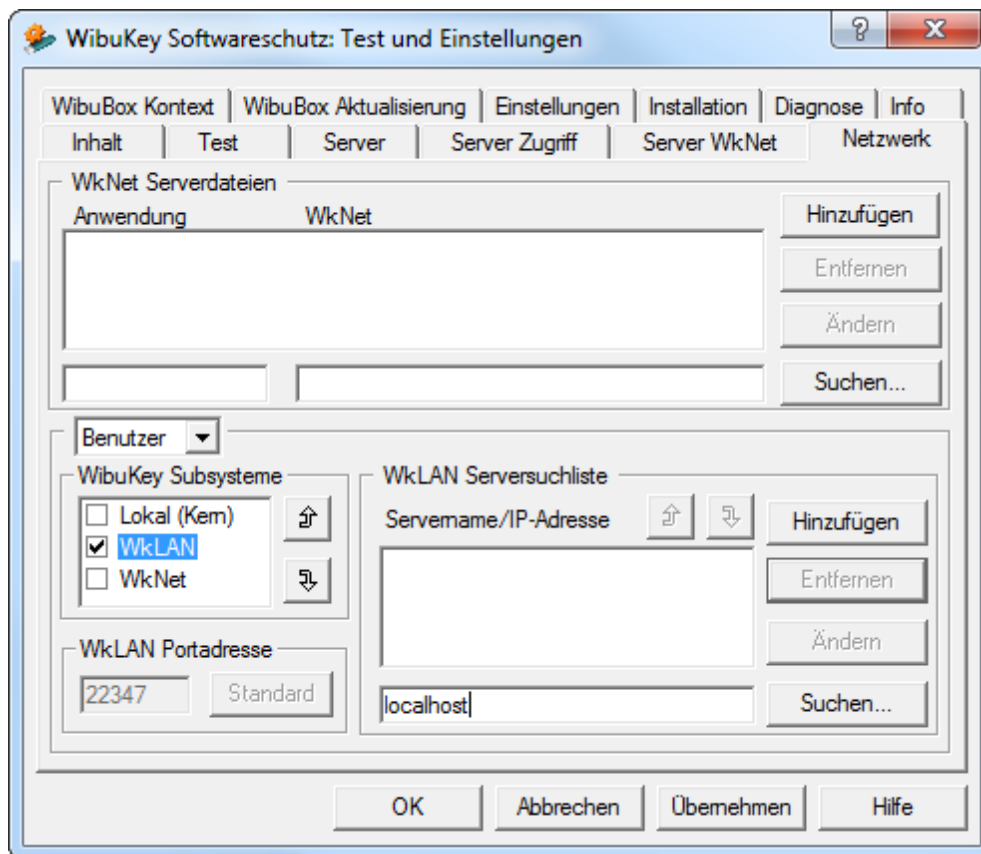
Set Parameters as described on your local machine:



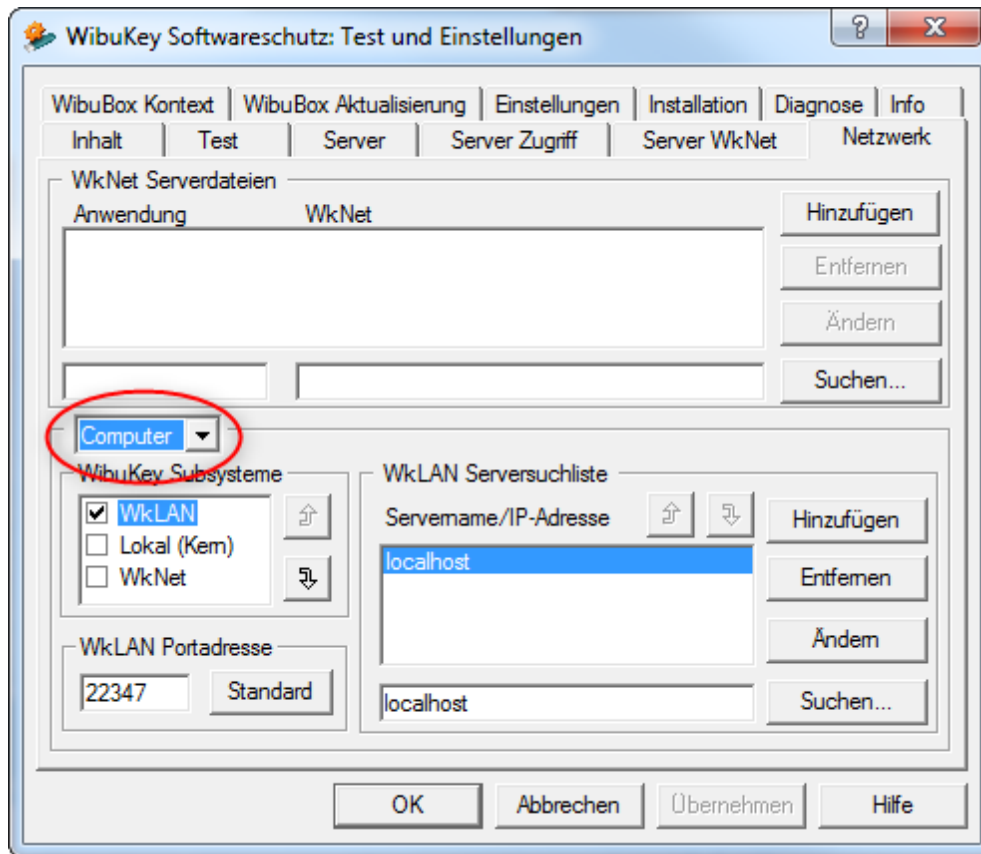
Settings are both the same for User and Computer.
Click Apply and OK.

2.3 Settings for cadXtract

If you want to use a Wibu-Dongle for cadXtract local on your computer, you have to change the networksettings to WkLan:



Then you must type in "localhost" and click "add". The same setting must be done for "computer":



If you have both cadXtract and camQuix license on your dongle it works fine, too.

3 How to use Dongle on Servers (LAN)

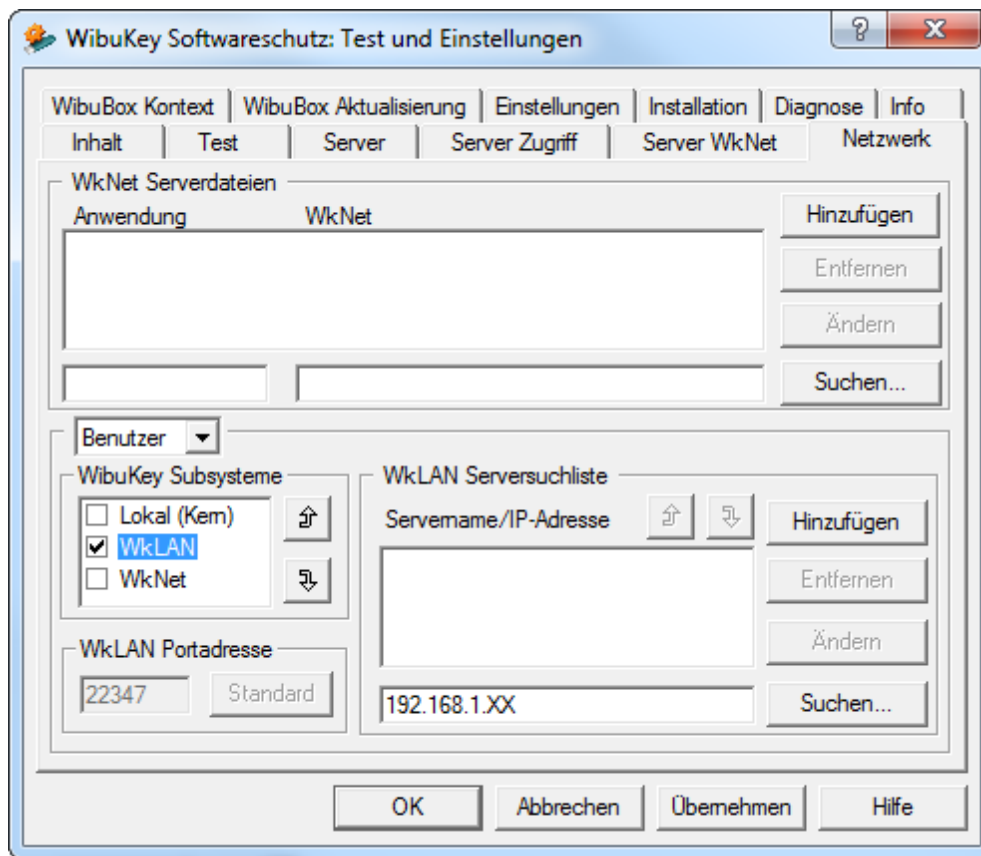
If you wish to plug in the dongle into your server and the other computers in the network shall be able to work with, follow the next steps!

The Software must be both installed on your PC and the server!

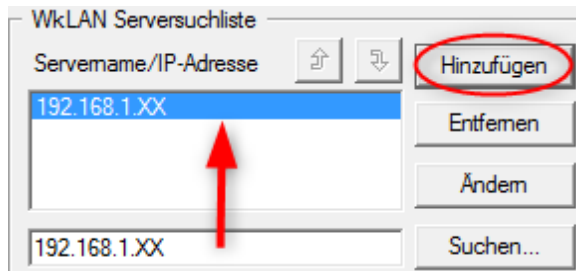
3.1 Settings for your Computer

Open up the program under system control -> search in searchbar for wibukey -> open

Set Parameters as described on your local machine:



then fill in the IP of the Server (Set the same Parameters for "Computer"):

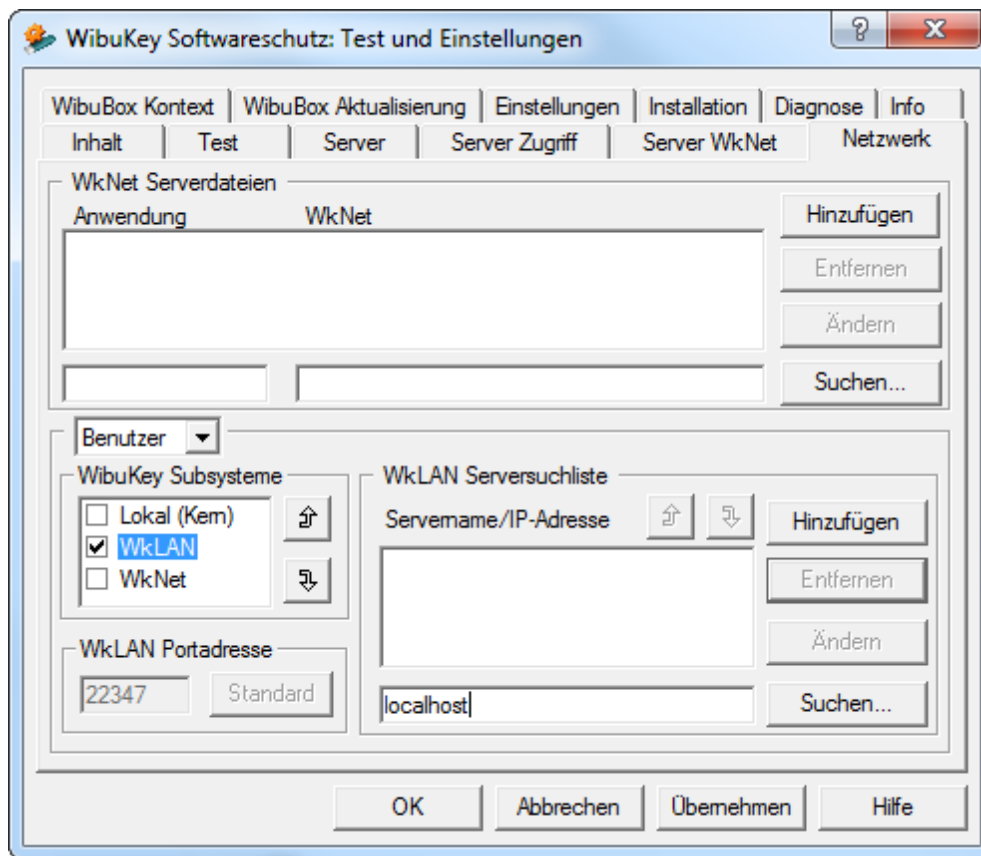


Afterwards don't forget to restart WibuKey Network Server as described before!

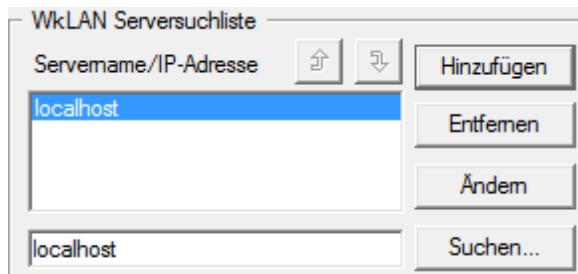
3.2 Settings for the Server

Open up the program under system control -> search in searchbar for wibukey -> open

Set Parameters as described on your server:



Then type in "localhost" and add (Set the same Parameters for "Computer"):



Afterwards don't forget to restart WibuKey Network Server as described before!

When you now start camquix, it will automatically search for the Wibu Dongle!

4 Trouble Shooting

In case something works no more, this Trouble Shooting might help you!

4.1 Crash after Win 10 Update

If the Wibukey Server doesn't start no more, it might be helpful to re-install the Wibukey Software. For this download the latest version of the software on the Wibukey site under Software/Downloads. During the process of install, the programm might ask you

to replace the old files, in this case type no.

After this process:

-Restart your computer

-Restart the Wibukey Server (it's listed in the Taskbar, right-klick, restart)

-Start the Wibukey Software and reenter the Servers Domain under the point Network for User and Computer (as described in chapters before)

-If there is still no connection to your dongle in the network, try to activate/deactivate Ipv6 in your system settings for the WLAN/LAN-Adapter

Now start camQuix and the Server should find the Wibukey Dongle in the network!